



8 Dean Ryle Street, Westminster
London SW1P

GARTONJONES.COM



8 Dean Ryle Street, Westminster
London, SW1P

GARTON JONES.COM

49 Marsham Street Lettings:
London +44 (0) 20 7340 0480
SW1P 3DP westminster@gartonjones.com
www.gartonjones.com

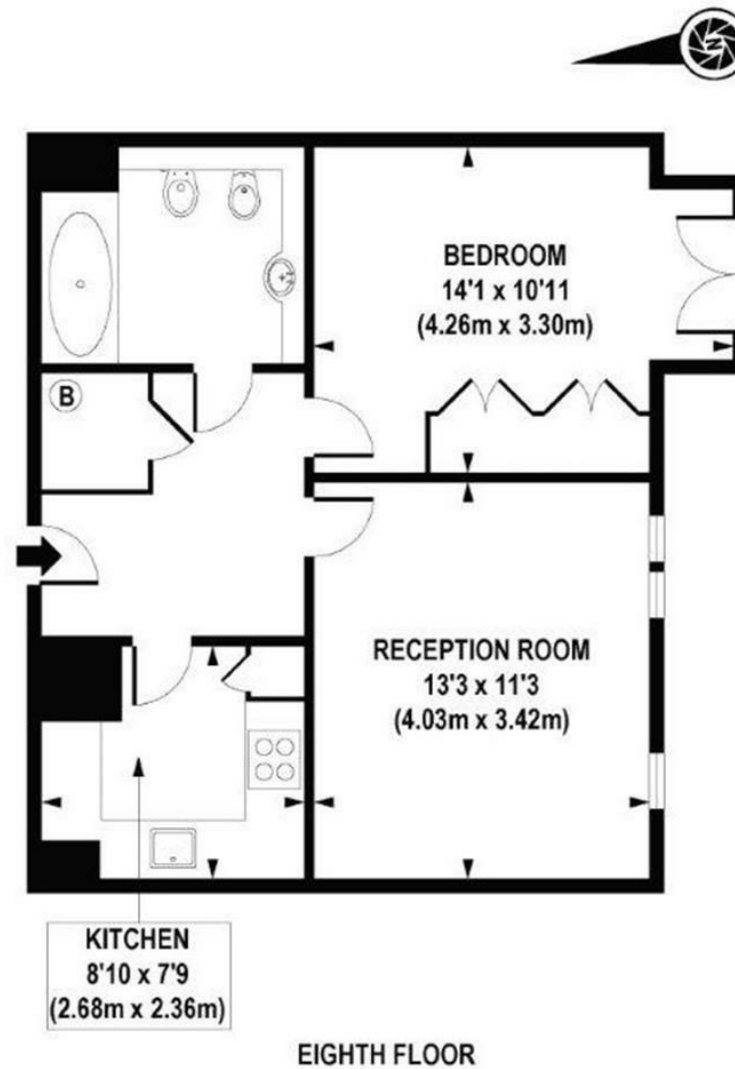
£575 Per Week

We are pleased to offer this fantastic one bedroom apartment available to let in this sought after development close to the banks of the River Thames. The accommodation measures at 511 Square Feet (47.43 Sq.M.) and comprises of a separate integrated kitchen, reception room, a good size bedroom with ample fitted wardrobes and a modern bathroom. Further benefits include wood flooring, double glazing and a secure entry system. Residents of Westminster Green benefit from a 24 hour concierge, lavish lobby area, business suite and a gymnasium. You will be within walking distance to the amenities of Horseferry Road and Victoria Street which include many shops, a Curzon Cinema and a host of new restaurants. The development is also located next door to the international headquarters of Burberry and the Westminster Hotel. The transport links of St James's Park, Westminster and Victoria are all within walking distance. Dean Ryle Street is convenient for access to many of the renowned local landmarks which include the Houses of Parliament, the River Thames and Westminster Abbey.

Deposit 5 Weeks
Minimum Term 12 Months
EPC Rating C (80)
Council Tax Band E (London Borough of Westminster)

- One Bedroom Apartment
- 8th Floor (Lift)
- 511 Square Feet (47.43 Sq.M)
- Separate Integrated Kitchen
- Reception Room
- Double Bedroom
- Modern Bathroom
- 24 Hour Concierge & Resident's Gymnasium
- Close to Local Amenities Including Shops and Restaurants
- Walking Distance to St James` Park & Westminster Tube Links





APPROXIMATE GROSS INTERNAL AREA 511 sq. ft / 47.43 sq. m

